

One Crane, One Truck, Another Great NSC Service!

The timing is right with NSC Lift. Fewer headaches coordinating the arrival of both a crane and materials. With NSC Lift, this all-in-one delivery service, gets your product on site at the same time as the crane.



22 Gateway Commerce Center
West Suite 101
Edwardsville, IL 62025
618.797.7800

4201 Duncan Ave.
St Louis, MO 63110
314.531.3200
800.221.2868
314.531.2542 (F)

401 South Cool Springs Rd.
O'Fallon, MO 63366
636.441.9466
800.225.1504
636.441.7697 (F)

nscservices@nationalsalesco.com
www.nationalsalesco.com



Let Us Do The Heavy Lifting



Need A Lift? How Heavy? How High?

This state of the art knuckle boom crane can handle 2,200 pounds at maximum load. This new addition to the National Sales Company delivery fleet provides a safe alternative to offloading by hand. And when you need product up high the articulated crane can lift your products as high as 40 feet.



Coordinated timing of both material delivery and crane service just got easier.

We know that having your material delivered is easy, having it delivered and lifted at the same time can be challenging.

NSC Lift will take your product to new heights, and we'll take away the stress of waiting for a crane truck to arrive on the job site to lift that product. This all-in-one service delivers your materials from National Sales Company to the project site and places it where you need it – even if you need it on a roof.

NSC LIFT Makes Deliveries Safer and Faster

- Heavy and awkward pipe is carefully offloaded.
- HVAC roof top units get lifted to their destination when delivered.
- Large valves and fittings are safely and easily unloaded from the truck to a designated area.

Add NSC Lift To Your Fleet

Even if your company has a crane truck, scheduling can still be a challenge. Let NSC Lift be of service. While your company's lift trucks are tied-up at other work sites moving and lifting equipment, NSC Lift can be delivering and placing your NSC purchased product where you need it and when you need it.

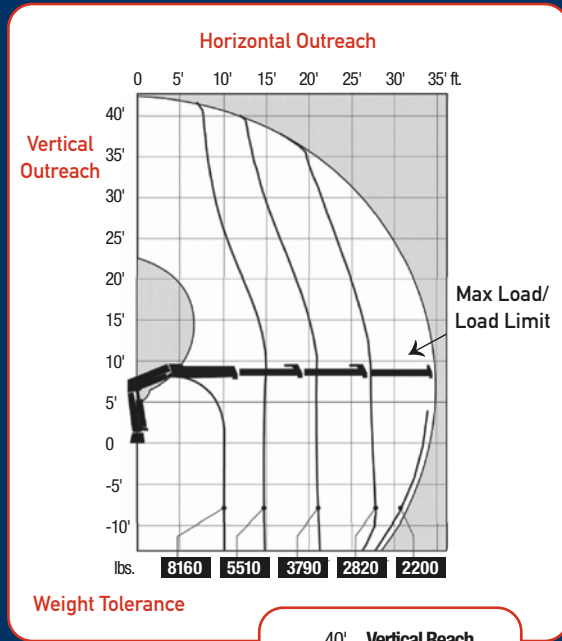
Schedule NSC Lift With Your Order

- Reserve NSC Lift 48-hours in advance
- Available Monday-Friday 6:30 a.m. to 4:00 p.m.
- Applicable for all regular/standard delivery areas
- First-Come, First-Served

To take advantage of NSC Lift, contact your National Sales Company representative or call us at 314.531.3200 (St. Louis location). Your order will be delivered by a National Sales Company driver who is insured and covered by worker's compensation.

Questions?

You can also reach us by email at nscservices@nationalsalesco.com or visit our website to learn about our other services, www.nationalsalesco.com.



How Easy?

When you place your order, simply ask to schedule the lift crane truck. We'll check time and date availability in order to best meet your needs. All requests are first-come, first-served. NSC Lift, ask for it by name.

*All standard delivery fees apply. Service available only for products purchased from National Sales Company.

All-In-One Service, NSC Lift – Safe and Easy Material Off-loading.

